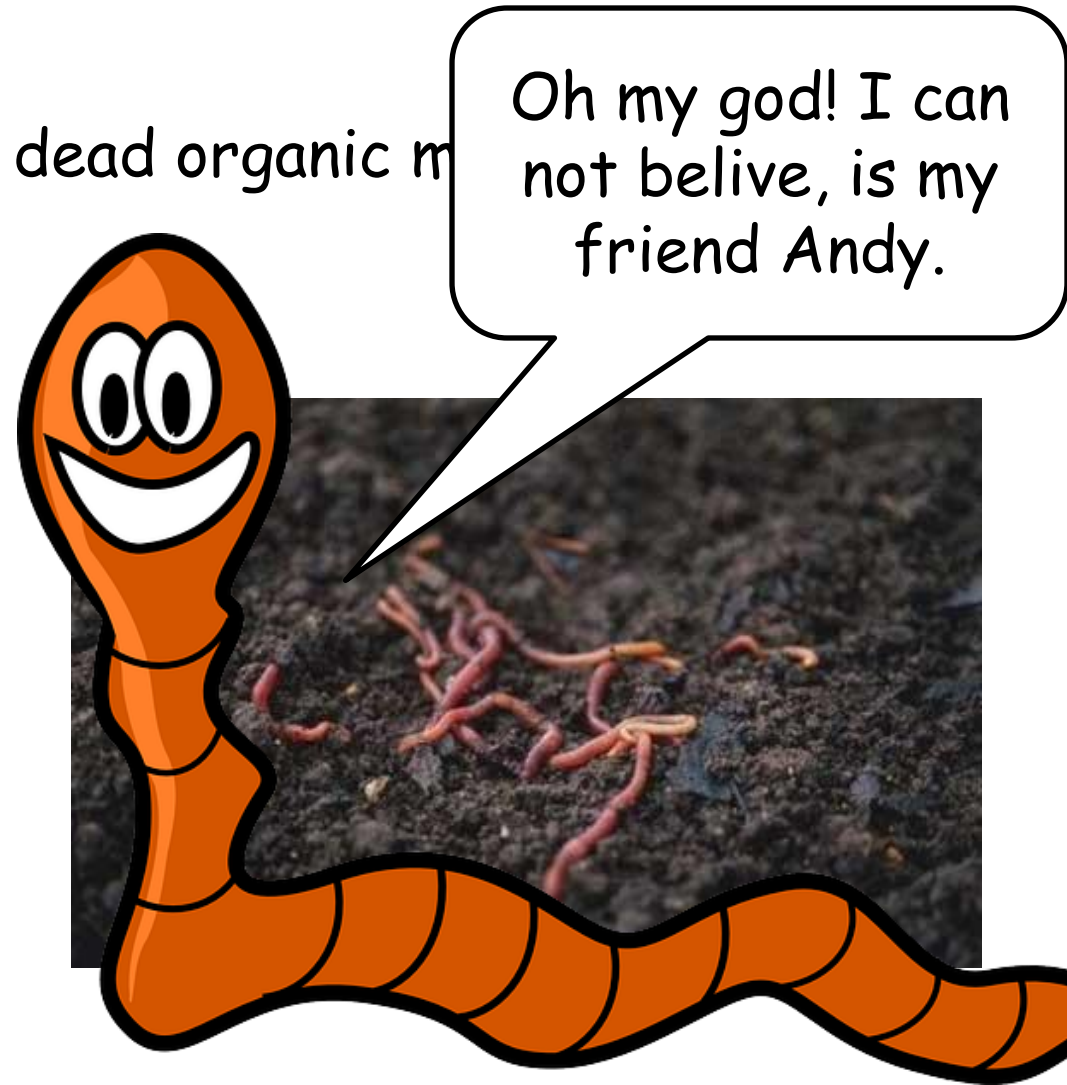




Hi, I am Peter and I  
am going to tell you as  
my body works!

- ★ Tube-shaped segmented worm.
- ★ It lives in soil.
- ★ It feeds on alive and dead organic matter.

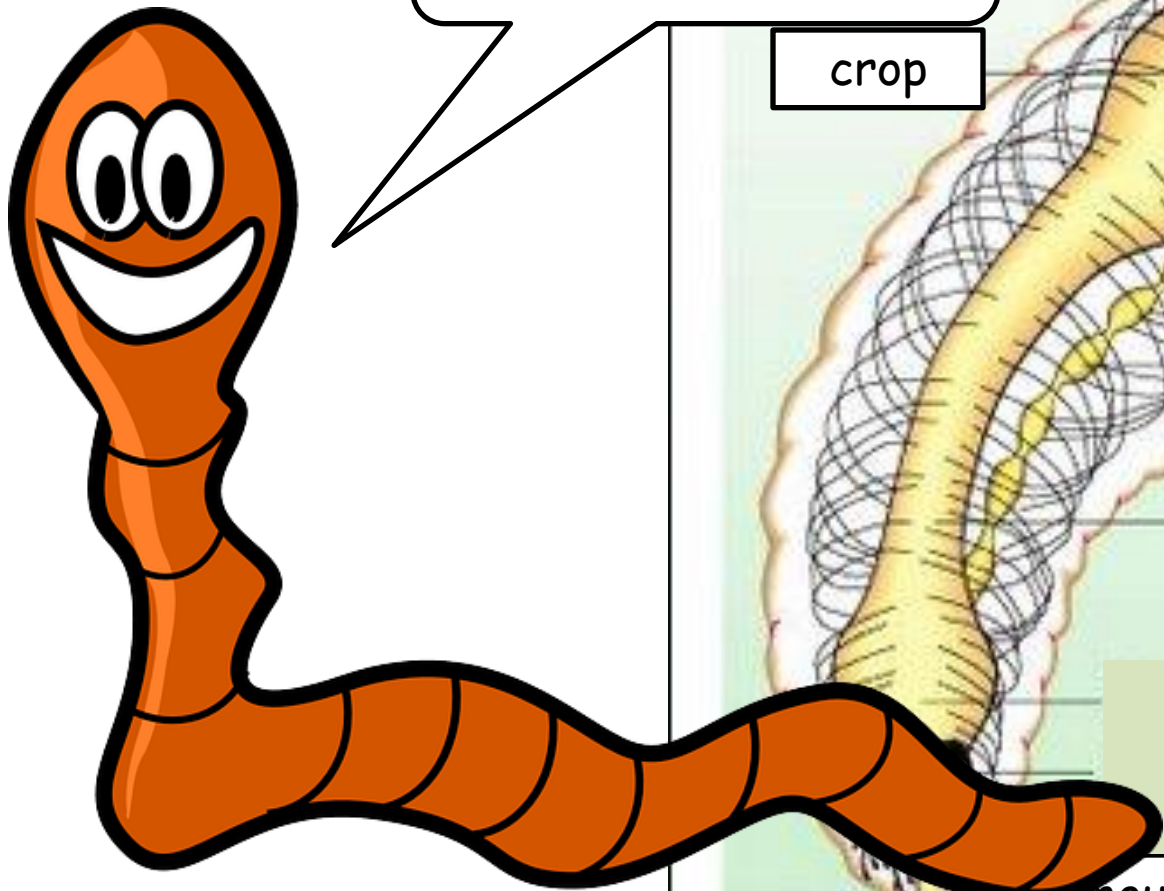


# DIGESTIVE SYSTEM

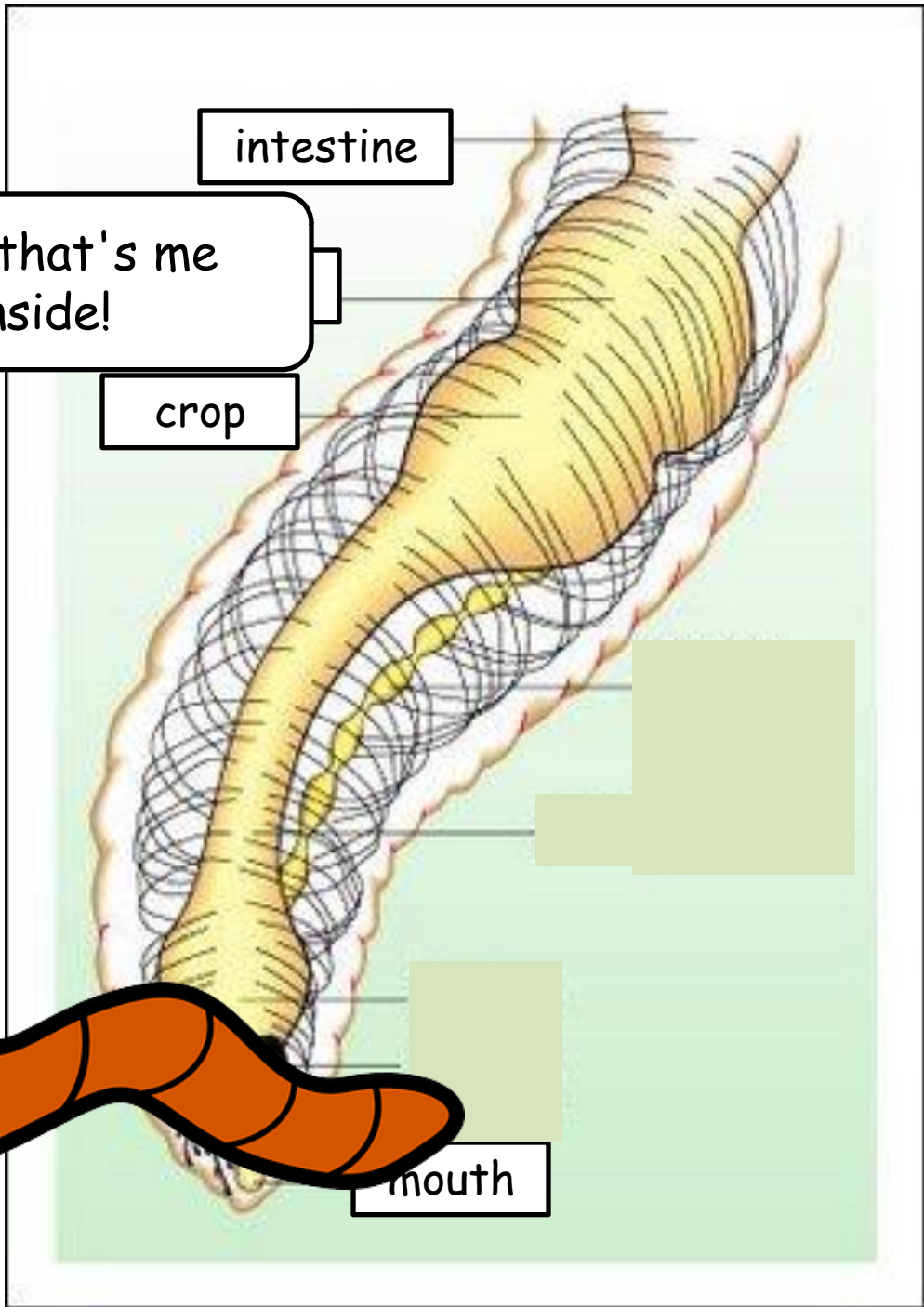
★ The digestive system consists of the mouth leading to a muscular pharynx, which sucks the vegetation and other decomposing organic materials, as dead matter living.

These are stored in the crop and gizzard crushed with the help of soil particles.

The remainder of the tube is a large intestine where the food is digested by secreted by cells secreting enzymes and absorbed by hair cells enzymes.



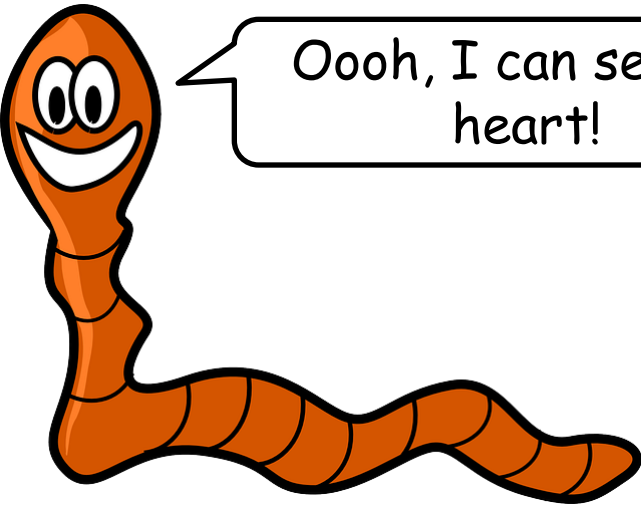
Oooh, that's me inside!



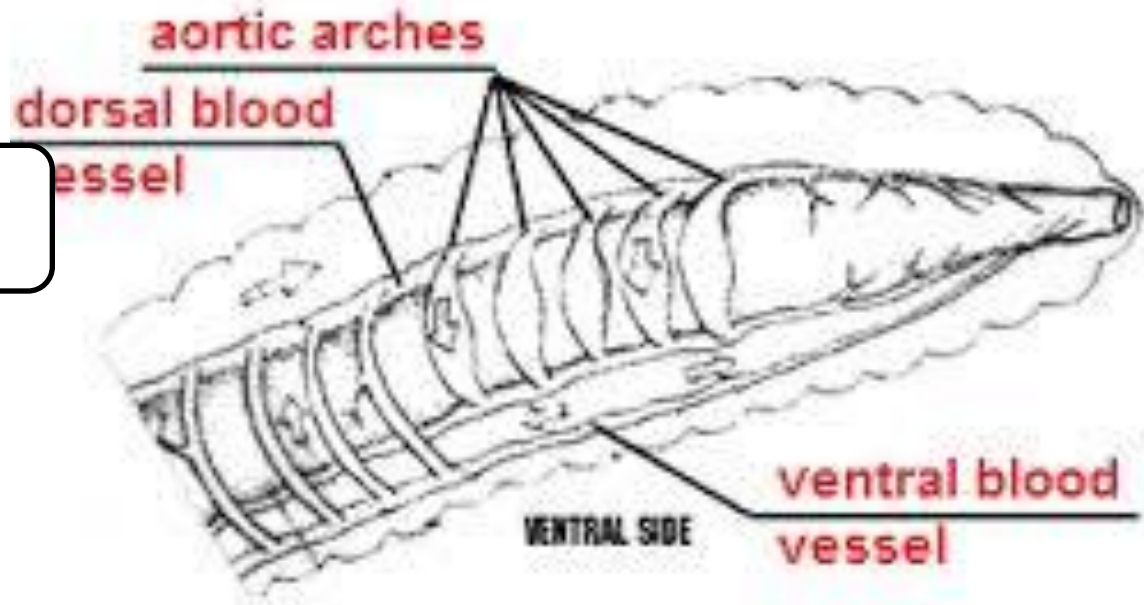
# CIRCULATORY SYSTEM

★ Earthworms have a closed circulatory system. In earthworms blood circulates by vessels. There are three main vessels that supply the blood to organs inside the earthworms.

These vessels are the aortic arches, dorsal blood vessels, and ventral blood vessels. The aortic arches function like a human heart. There are five pairs of aortic arches, which have the responsibility of pumping blood into the dorsal and ventral blood vessels. The dorsal blood vessels are responsible for carrying blood to the front of the earthworm's body and the ventral blood vessels are responsible for carrying blood to the back of the earthworm's body.



Oooh, I can see my heart!



aortic arches  
dorsal blood vessel

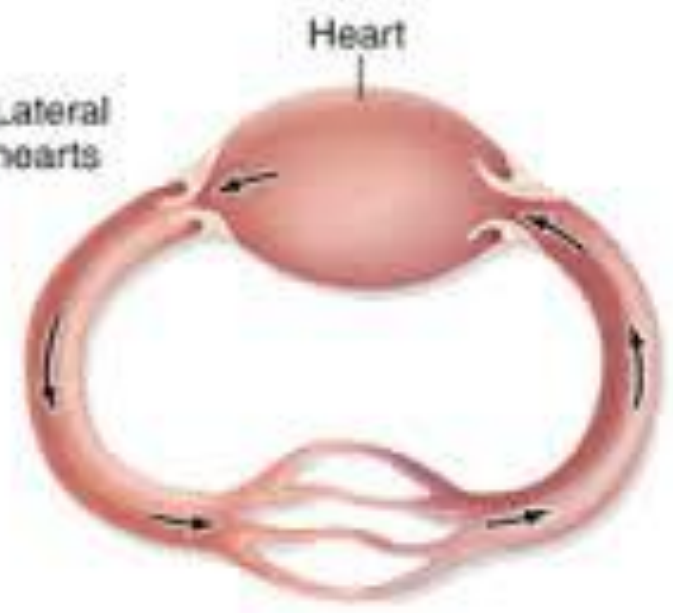
VENTRAL SIDE

ventral blood vessel

Earthworm



Lateral hearts

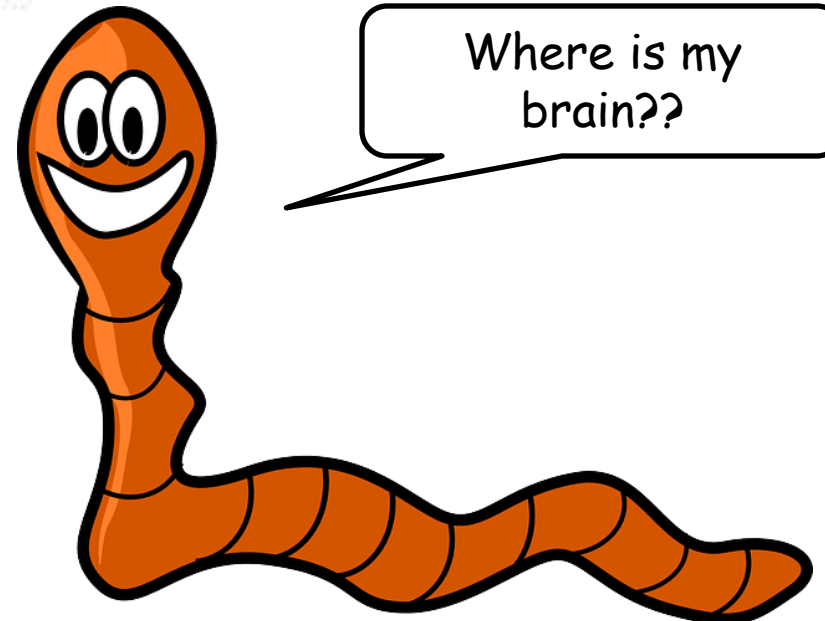
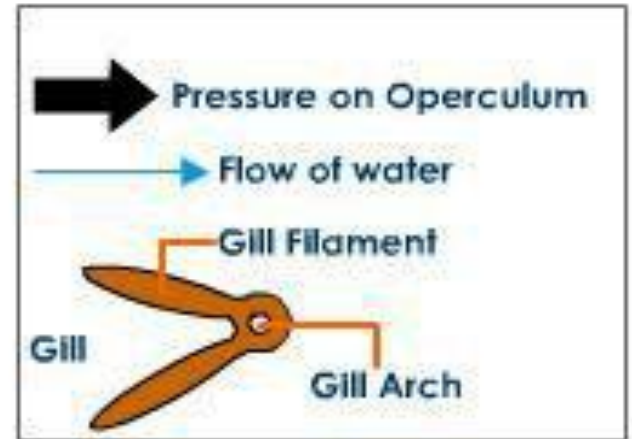
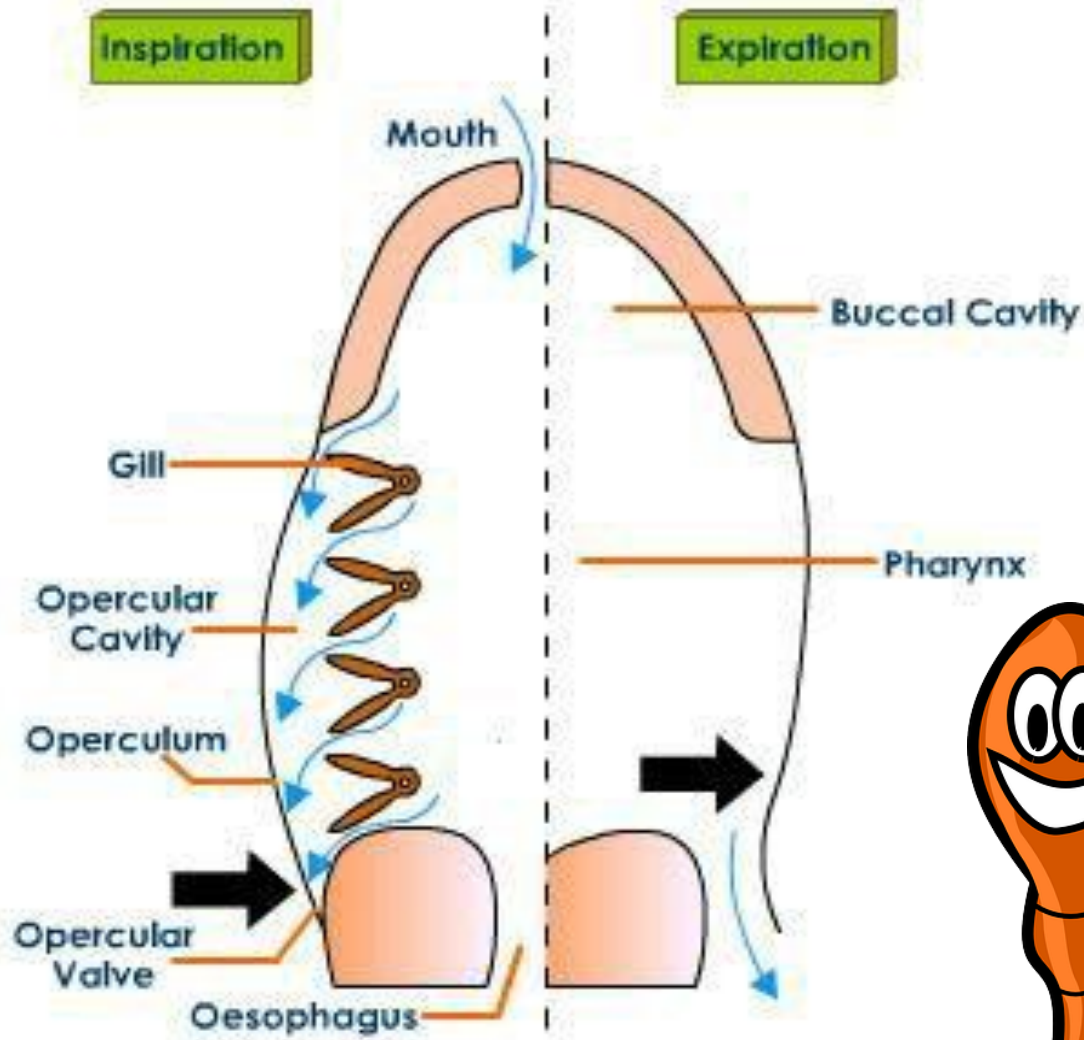


Heart



## RESPIRATORY SYSTEM

- ★ Although earthworms don't have respiratory organs, they have their gas exchange through their moist skin and capillaries (small veins) where hemoglobin, a substance in the blood plasma, catches oxygen and gives carbon dioxide.







THE  
END

By: Claudia Rodrigo, Sonia Arenzana,  
Natalia Hernández and Sofía Guerra.